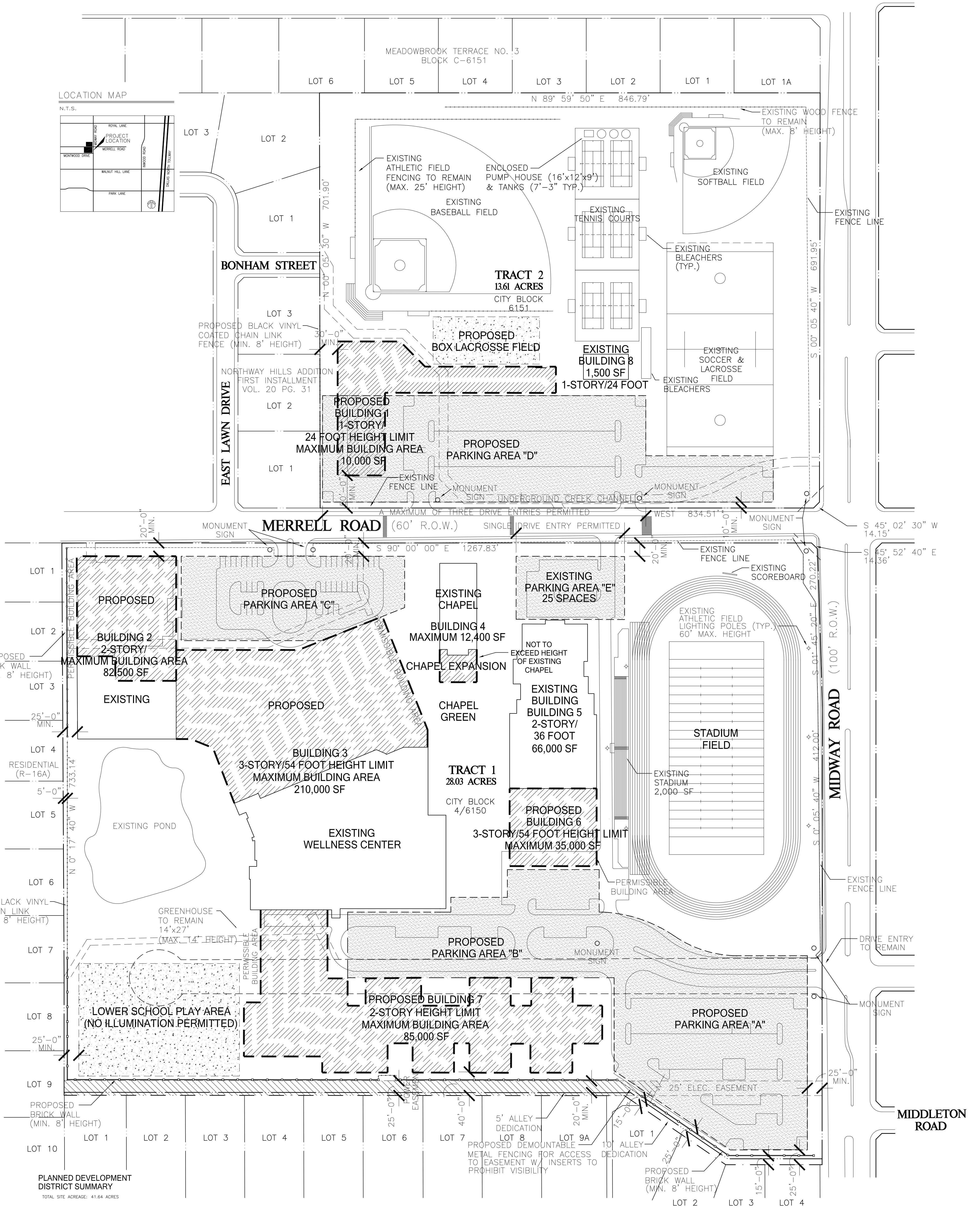
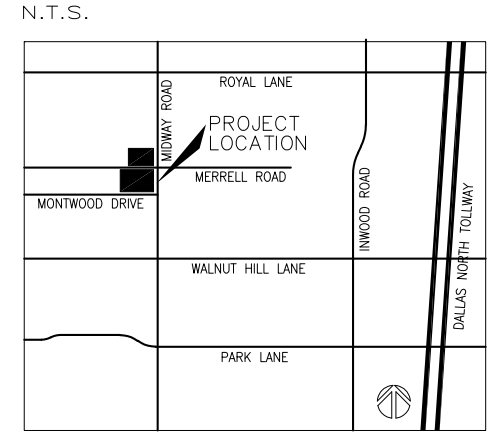


LOCATION MAP



PLANNED DEVELOPMENT DISTRICT SUMMARY

TOTAL SITE ACREAGE: 41.64 ACRES

PARKING REQUIREMENTS

SCHOOL LEVEL	SCHOOL LEVEL	# OF CLASSROOMS	PARKING REQUIRED
LOWER (1.5 Sp./Class)	LOWER SCHOOL	36	54 SP
MIDDLE (3.5 Sp./Class)	MIDDLE SCHOOL	27	95 SP
UPPER (6 Sp./Class)	UPPER SCHOOL	46	276 SP
TOTAL		109	425 SPACES

NO ADDITIONAL PARKING REQUIREMENTS FOR CHURCH BUILDING USE

PARKING TABULATIONS

PARKING AREA	EXISTING COUNT	FUTURE COUNT
A	0 SPACES	190 SPACES
B	40 SPACES	55 SPACES
C	137 SPACES	38 SPACES
D	188 SPACES	299 SPACES
E	24 SPACES	25 SPACES
TOTAL	389 SPACES	607 SPACES

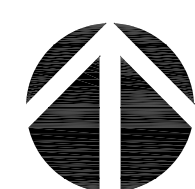
NOTE: NOISE EMANATING FROM THE PUMP HOUSE CANNOT EXCEED A MAXIMUM OF 56 Dba AS MEASURED AT THE BOUNDING LOT LINE.

Building	Existing	Proposed	Height/Stories
1	1,532 sf	10,000 sf	24 feet/1 story
2	32,568 sf	82,500 sf	40 feet/2 stories (height limited by RPS)
3	173,628 sf	210,000 sf	54 feet/ 3 stories
4	8,847 sf	12,400 sf	54 feet/ 1 story
5	66,000 sf	66,000 sf	36 feet/ 2 stories
6	n/a	35,000 sf	54 feet/ 3 stories
7	n/a	85,000 sf	40 feet/2 stories (Height limited by RPS)
8	1,500 sf	1,500 sf	24 feet/1 story

FOR OFFICIAL USE ONLY  
Z145-157 (WE)



2808 Fairmount Street, Suite 300 Dallas, Texas 75201 | 214.303.1500  
3300 West 7th Street, Suite 110 Fort Worth, Texas 76107 | 817.303.1500



0 80 160 240 Feet  
1" = 80 Feet

Owner:  
Episcopal School of Dallas, Inc.  
4100 Merrell Road  
Dallas, Texas 75229  
214-358-4368

Job #: 14202.00  
File Name: Site-PD-9.dwg  
Date: 10/28/16  
Drawn by: R. Lawrence Good / Brian E. Moore

**DEVELOPMENT PLAN**  
Episcopal School of Dallas  
Z145-157 (WE)  
4100 Merrell Road  
Dallas, Texas  
41.64 Acres